



LTPC[®]
恒敏灵通气动

宁波恒敏灵通气动成套有限公司

NINGBO HENGMIN LINGTONG PNEUMATIC COMPONENTS&SET CO.,LTD

地址:浙江省宁波市溪口镇公棠工业区 P. C: 315501

ADD: Gongtang Industrial Zone, Xikou, Ningbo, Zhejiang, China

TEL: +86-574-88850982

FAX: +86-574-88853982

Http://www.ltqd.com

E-mail: sales@ltqd.com



官网



公众号

www.ltqd.com

2019



AC系列三联件/AC Series Ari Filter Combination(F.R.L Combination)

订购代码/Ordering Code

A	—	C	—	4000	—	01	—	D
系列 Series		功能 Function F.R.L 三联件 F.R.L Combination		规格代号 Specification Code 2000 3000 4000 5000		接管口径 Port Size 01:G1/8" 02:G1/4" 03:G3/8" 04:G1/2" 06:G3/4" 10:G1"		排水方式 Drain Type 空白:标准手动式 Blank: Manual Drain Type D:自动排水 D:Auto Drain Type



AC2000-02

AC3000-03

AC4000-04

AC5000-10

规格/Specification

型号/Model	AC2000-01	AC2000-02	AC3000-02	AC3000-03	AC4000-03	AC4000-04	AC5000-06	AC5000-10	
接管口径/Port Size	G1/8"	G1/4"	G1/4"	G3/8"	G3/8"	G1/2"	G3/4"	G1"	
额定流量/Rating Flow	500L/min		2000L/min		4000L/min		5000L/min		
最高使用压力/Max Working Pressure	1.0Mpa								
保证耐压力/Ensured Pressure Resistance	1.5Mpa								
过滤精度/Filter Precision	25um(5um 50um)								
调压范围/Adjustable Pressure Range	0.05-0.85Mpa								
环境及流体温度/Environment & Fluid Temperature	-5~60℃(但未冻结)/(Not Frozen)								
建议用油/Recommended Oil	透平1号油ISOVG32								
容器材质/Container Material	聚碳酸酯/PC								
阀型/Valve Type	带溢流型/With Over Flow								
保护杯罩/Protective Cover	无/NO				铁/Iron				
压力表/Gauge	G36-10-01				G46-10-02				
构成元件/ Components	空气过滤器/Filter	AF2000-01	AF2000-02	AF3000-02	AF3000-03	AF4000-03	AF4000-04	AF5000-06	AF5000-10
	减压阀/Regulator	AR2000-01	AR2000-02	AR3000-02	AR3000-03	AR4000-03	AR4000-04	AR5000-06	AR5000-10
	油雾器/Lubricator	AL2000-01	AL2000-02	AL3000-02	AL3000-03	AL4000-03	AL4000-04	AL5000-06	AL5000-10

LTAC系列三联件 LTAC Series Air Filter Combination(F.R.L Combination)

订购代码/Ordering Code

LT

公司名称
Company Name

A

系列
Series

C

功能
Function
F.R.L三联件
F.R.L Combination

8000

规格代号
Specification Code
8000

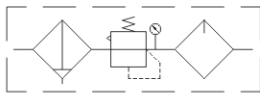
15

接口螺纹
Thread Pipe
12: G1 1/4
15: G1 1/2

D

排水方式
Drain Type
空白: 标准手动式
Blank: Manual Drain Type
D: 自动排水
D: Auto Drain Type

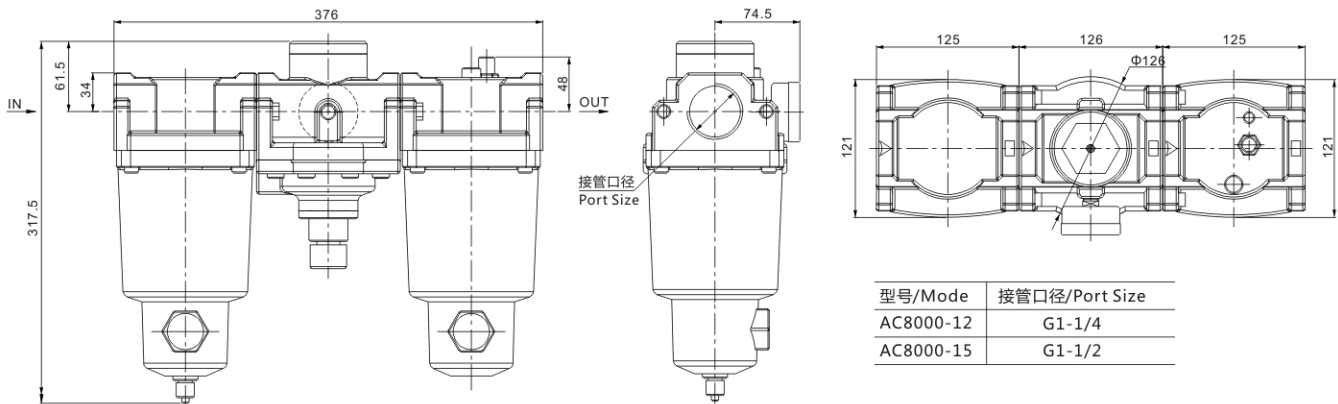
图形符号/Graphic Symbol



规格/Specification

型号/Mode	LT-AC8000-12		LT-AC8000-15
接管口径/Port Size	G1 1/4		G1 1/2
额定流量/Rating Flow	12000L/min		20000L/min
最高使用压力/Max. Working Pressure	1.0Mpa		
保证耐压力/Ensured Pressure Resistance	1.5Mpa		
过滤精度/Filter Precision	25um(5um 50um)		
调压范围/Adjustable Pressure Range	0.05-0.85Mpa		
环境及流体温度/Environment & Fluid Temperature	-5~60℃(但未冻结)/(Not Frozen)		
建议用油/Recommended Oil	透平1号油 ISOVG32		
构造/Structure	内部先导式溢流型先导空气常泄孔 Internal Pilot and Overflow Venthole		
压力表/Gauge	G46-10-02		
构成元件/Components	空气过滤器/Filter	LT-AF8000-12	LT-AF8000-15
	减压阀/Regulator	LT-AR8000-12	LT-AR8000-15
	油雾器/Lubricator	LT-AL8000-12	LT-AL8000-15

外形尺寸图/Overall Dimension Drawing(mm)



AC系列二联件/AC Series Ari Filter Combination(FR.L Combination)

AA® 订购代码/Ordering Code



AC2010-02



AC3010-03



AC4010-04



AC5010-10

AA® 规格/Specification

型号/Model	AC2010-01	AC2010-02	AC3010-02	AC3010-03	AC4010-03	AC4010-04	AC5010-06	AC5010-10	
接管口径/Port Size	G1/8"	G1/4"	G1/4"	G3/8"	G3/8"	G1/2"	G3/4"	G1"	
额定流量/Rating Flow	500L/min		2000L/min		4000L/min		5000L/min		
最高使用压力/Max Working Pressure	1.0Mpa								
保证耐压力/Ensured Pressure Resistance	1.5Mpa								
过滤精度/Filter Precision	25um(5um 50um)								
调压范围/Adjustable Pressure Range	0.05-0.85Mpa								
环境及流体温度/Environment & Fluid Temperature	-5~60℃(但未冻结)/(Not Frozen)								
建议用油/Recommended Oil	透平1号油ISOVG32								
容器材质/Container Material	聚碳酸酯/PC								
阀型/Valve Type	带溢流型/With Over Flow								
保护杯罩/Protective Cover	无/NO				铁/Iron				
压力表/Gauge	G36-10-01				G46-10-02				
构成元件/ Components	空气过滤器/Filter&Regulator	AW2000-01	AW2000-02	AW3000-02	AW3000-03	AW4000-03	AW4000-04	AW5000-06	AW5000-10
	油雾器/Lubricator	AL2000-01	AL2000-02	AL3000-02	AL3000-03	AL4000-03	AL4000-04	AL5000-06	AL5000-10

AW系列过滤减压阀/AW Series Filter & Regulator

订购代码/Ordering Code

A	W	4000	04	D
系列 Series	功能 Function 过滤减压阀 Filter & Regulator	规格代号 Specification Code 2000 3000 4000 5000	接管口径 Port Size 01:G1/8" 02:G1/4" 03:G3/8" 04:G1/2" 06:G3/4" 10:G1"	排水方式 Drain Type 空白:标准手动式 Blank: Manual Drain Type D:自动排水 D:Auto Drain Type



AW2000-02



AW4000-04

规格/Specification

型号/Model	AW2000-01	AW2000-02	AW3000-02	AW3000-03	AW4000-03	AW4000-04	AW5000-06	AW5000-10
接管口径/Port Size	G1/8"	G1/4"	G1/4"	G3/8"	G3/8"	G1/2"	G3/4"	G1"
额定流量/Rating Flow	500L/min		2000L/min		4000L/min		5000L/min	
最高使用压力/Max Working Pressure	1.0Mpa							
保证耐压力/Ensured Pressure Resistance	1.5Mpa							
过滤精度/Filter Precision	25um(5um 50um)							
调压范围/Adjustable Pressure Range	0.05-0.85Mpa							
环境及流体温度/Environment & Fluid Temperature	-5-60°C(但未冻结)/(Not Frozen)							
容器材质/Container Material	聚碳酸酯/PC							
阀型/Valve Type	带溢流型/With Over Flow							
保护杯罩/Protective Cover	无/No		铁/Iron					
压力表/Gauge	G36-10-01				G46-10-02			

AF系列空气过滤器/AF Series Air Filter

订购代码/Ordering Code

A	F	4000	01	D
系列 Series	功能 Function 过滤器 Filter	规格代号 Specification Code 2000 3000 4000 5000	接管口径 Port Size 01:G1/8" 02:G1/4" 03:G3/8" 04:G1/2" 06:G3/4" 10:G1"	排水方式 Drain Type 空白:标准手动式 Blank: Manual Drain Type D:自动排水 D:Auto Drain Type



AF2000-02



AF4000-04

规格/Specification

型号/Model	AF2000-01	AF2000-02	AF3000-02	AF3000-03	AF4000-03	AF4000-04	AF5000-06	AF5000-10
接管口径/Port Size	G1/8"	G1/4"	G1/4"	G3/8"	G3/8"	G1/2"	G3/4"	G1"
额定流量/Rating Flow	500L/min		2000L/min		4000L/min		5000L/min	
最高使用压力/Max Working Pressure	1.0Mpa							
保证耐压力/Ensured Pressure Resistance	1.5Mpa							
过滤精度/Filter Precision	25um(5um 50um)							
容器材质/Container Material	聚碳酸酯/PC							
环境及流体温度/Environment & Fluid Temperature	-5-60°C(但未冻结)/(Not Frozen)							
保护杯罩/Protective Cover	无/NO		铁/Iron					

AR系列减压阀/AR Series Regulator

AA® 订购代码/Ordering Code

A	—	R	—	4000	—	04
系列 Series		功能 Function 调压器 Regulator		规格代号 Specification Code 2000 2500 3000 4000 5000		接管口径 Port Size 01:G1/8" 02:G1/4" 03:G3/8" 04:G1/2" 06:G3/4" 10:G1"



AR2000-02



AR4000-04

AA® 规格/Specification

型号/Model	AR2000-01	AR2000-02	AR3000-02	AR3000-03	AR4000-03	AR4000-04	AR5000-06	AR5000-10
接管口径/Port Size	G1/8"	G1/4"	G1/4"	G3/8"	G3/8"	G1/2"	G3/4"	G1"
额定流量/Rating Flow	500L/Min		2000L/Min		4000L/Min		5000L/Min	
最高使用压力/Max Working Pressure	1.0Mpa							
保证耐压力/Ensured Pressure Resistance	1.5Mpa							
调压范围/Adjustable Pressure Range	0.05-0.85Mpa							
环境及流体温度/Environment & Fluid Temperature	-5~60℃(但未冻结)/(Not Frozen)							
阀型/Valve Type	带溢流型/With Over Flow							
压力表/Gauge	G36-10-01				G46-10-02			

AL系列油雾器/AL Series Lubricator

AA® 订购代码/Ordering Code

A	—	L	—	4000	—	04
系列 Series		功能 Function 油雾器 Lubricator		规格代号 Specification Code 2000 3000 4000 5000		接管口径 Port Size 01:G1/8" 02:G1/4" 03:G3/8" 04:G1/2" 06:G3/4" 10:G1"



AL2000-02



AL4000-04

AA® 规格/Specification

型号/Model	AL2000-01	AL2000-02	AL3000-02	AL3000-03	AL4000-03	AL4000-04	AL5000-06	AL5000-10
接管口径/Port Size	G1/8"	G1/4"	G1/4"	G3/8"	G3/8"	G1/2"	G3/4"	G1"
额定流量/Rating Flow	500L/min		2000L/min		4000L/min		5000L/min	
最高使用压力/Max Working Pressure	1.0Mpa							
保证耐压力/Ensured Pressure Resistance	1.5Mpa							
环境及流体温度/Environment & Fluid Temperature	-5~60℃(但未冻结)/(Not Frozen)							
油滴最小流量/Min Flow of Oil Drop	15L/min	30-40L/min		40-50L/min		190L/min		
建议用油/Recommended Oil	透平1号油 ISOVG32							
容器材质/Container Material	聚碳酸酯/PC							
保护杯罩/Protective Cover	无/No				铁/Iron			

大流量型空气过滤器/Big Flow Air Filter

订购代码/Ordering Code

LT	A	F	9	00	20
公司名称 Company Name	系列 Series	功能 Function F: 过滤器 F: Filter	主体大小 Body Size 8: G1½" 9: G2" 10: G2½" 12: G3"	自动排水器 Drain Type 00: 标准手动式 00: Manual Drain 11: 自动排水 11: Auto Drain	接管口径 Port Size 15: G1½" 20: G2" 25: G2½" 30: G3"

规格/Specification

型号/Model	AF800-15	AF900-20	AF1000-25	AF1200-30
接口螺纹/Pipe Thread	G1½"	G2"	G2½"	G3"
最高使用压力/Max Working Pressure (Mpa)	1.0			
保证耐压力/Ensured Pressure Resistance (Map)	1.5			
环境及流体温度/Environment & Fluid Temperature	-5~60°C (但未冻结/Not Frozen)			
过滤精度/Filter Precision	标准/Standard: 20-50um			
保护罩/Protective Cover	有/Yes			
水杯, 视水窗材质/Material of Water Cup	聚碳酸酯/PC			
额定流量/Rating Flow (L/min)	12000	20000	25000	28000



AF800-15

AF900-20



AF1000-25

AF1200-30

大流量型减压阀 Big Flow Regulator

订购代码/Ordering Code

LT	A	R	9	25	20
公司名称 Company Name	系列 Series	功能 Function R: 减压阀 R: Regulator	主体大小 Body Size 8: G1½" 9: G2" 10: G2½" 12: G3"	构造 Structure	接管口径 Port Size 15: G1½" 20: G2" 25: G2½" 30: G3"

规格/Specification

型号/Model	AR825-15	AR925-20	AR1025-25	AR1225-30
接口螺纹/Pipe Thread	G1½"	G2"	G2½"	G3"
最高使用压力/Max Working Pressure (Mpa)	1.0			
保证耐压力/Ensured Pressure Resistance (Map)	1.5			
环境及流体温度/Environment & Fluid Temperature	-5~60°C (但未冻结/Not Frozen)			
构造/Structure	内部先导式溢流型先导空气常泄孔 Internal Pilot and Overflow Venthole			
调压范围/Adjustable Pressure Range (Mpa)	0.05-0.85			
压力表/Gauge	G46-10-02			
额定流量/Rating Flow (L/min)	12000	20000	23000	28000



AR825-15

AR925-20



AR1025-25

AR1225-30

大流量型油雾器/Big Flow Lubricator

订购代码/Ordering Code

LT	A	L	900	20
公司名称 Company Name	系列 Series	功能 Function L:油雾器 L:Lubricator	主体大小 Body Size 800: G1 1/2" 900: G2"	接管口径 Port Size 15: G1 1/2" 20: G2"

规格/Specification

型号/Model	AL800-15	AL900-20
接管口径/Port Size	G1 1/2"	G2"
最高使用压力/Max. Working Pressure	1.0MPa	
环境及流体温度/ Environment & Fluid Temperature	-5~60℃ (但未冻结) / (Not Frozen)	
油滴最小流量/Min. Flow of Oil Drop	650L/min	1800L/min
建议用油/Recommended Oil	透平1号油 ISOVG32	
保护罩/Protective Cover	有/Yes	



主路过滤器/Main Line Filter

订购代码/Ordering Code

LT	AFF	350	04	D
公司名称 Company Name	系列 Series	主体大小 Body Size 350:G1/2" 550:G1" 650:G1 1/2"	接管口径 Port Size 04:G1/2" 10:G1" 14:G1 1/2"	自动排水器 Drain Type 00:标准手动式 00:Manual Drain 11:自动排水 11:Auto Drain

规格/Specification

型号/Model	LTAFF350-04	LTAFF550-10	LTAFF650-14
接管口径/Port Size	G1/2"	G1"	G1 1/2"
额定流量/Rating Flow	1500L/min	3700L/min	6000L/min
最高使用压力/Max. Working Pressure	1.0MPa		
最低使用压力/Min. Working Pressure	0.05MPa		
工作温度/Operating Temperature	-5~60℃(但未冻结)/(Not Frozen)		
过滤精度/Filter Precision	3um(去除95%)/(Removal 95%)		
滤芯寿命/Element Life	当压力差达到(At Press. Differential)0.1Mpa时		



AC.BC系列三联件/AC.BC Series Ari Filter Combination(F.R.L Combination)

订购代码/Ordering Code

BC — **2000** — **D**

型号/Model
AC:小型/Small Size
BC:大型/Large Size

接管口径
Port Size
2000:G1/4"
3000:G3/8"
4000:G1/2"

排水方式
Drain Type
空白:标准手动式
Blank: Manual Drain Type
D:自动排水
D:Auto Drain Type



AC2000



BC4000

规格/Specification

型号 /Model	AC2000	BC2000	BC3000	BC4000	
接管口径/Port Size	G1/4"		G3/8"	G1/2"	
工作介质/Operating Fluid	空气/Air				
最高使用压力/Max Working Pressure	1.0Mpa				
保证耐压力/Ensured Pressure Resistance	1.5Mpa				
过滤精度/Filter Precision	25um(5um 50um)				
调压范围/Adjustable Pressure Range	0.05-0.85Mpa				
环境及流体温度/Environment & Fluid Temperature	-5~60℃(但未冻结)/(Not Frozen)				
建议用油/Recommended Oil	ISOVG32或同级用油/ISOVG32 or Same Grade Oil				
压力表/Gauge	G36-10-01		G46-10-02		
构成元件/ Components	空气过滤器/Filter	AF2000	BF2000	BF3000	BF4000
	减压阀/Regulator	AR2000	BR2000	BR3000	BR4000
	油雾器/Lubricator	AL2000	BL2000	BL3000	BL4000

AFC.BFC系列二联件/AFC.BFC Series Ari Filter Combination(FR.L Combination)

订购代码/Ordering Code

BFC — **2000** — **D**

型号/Model
AFC:小型/Small Size
BFC:大型/Large Size

接管口径
Port Size
2000:G1/4"
3000:G3/8"
4000:G1/2"

排水方式
Drain Type
空白:标准手动式
Blank: Manual Drain Type
D:自动排水
D:Auto Drain Type



AFC2000



BFC4000

规格/Specification

型号 /Model	AFC2000	BFC2000	BFC3000	BFC4000	
接管口径/Port Size	G1/4"		G3/8"	G1/2"	
工作介质/Working Medium	空气/Air				
最高使用压力/Max Working Pressure	1.0Mpa				
保证耐压力/Ensured Pressure Resistance	1.5Mpa				
过滤精度/Filter Precision	25um(5um 50um)				
调压范围/Adjustable Pressure Range	0.05-0.85Mpa				
环境及流体温度/Environment & Fluid Temperature	-5~60℃(但未冻结)/(Not Frozen)				
建议用油/Recommended Oil	透平1号油 ISOVG32				
压力表/Gauge	G36-10-01		G46-10-02		
构成元件/ Components	滤减压阀/Filter&Regulator	AFR2000	BFR2000	BFR3000	BFR4000
	油雾器/Lubricator	AL2000	BL2000	BL3000	BL4000

AFR.BFR系列过滤减压阀/AFR.BFR Series Filter & Regulator

订购代码/Ordering Code

BFR

 系列
 Series
 AFR:小型/Small Size
 BFR:大型/Large Size

2000

 接管口径
 Port Size
 2000:G1/4"
 3000:G3/8"
 4000:G1/2"

D

 排水方式
 Drain Type
 空白:标准手动式
 Blank: Manual Drain Type
 D:自动排水
 D:Auto Drain Type

AFR2000

BFR4000

规格/Specification

型号 /Model	AFR2000	BFR2000	BFR3000	BFR4000
接管口径/Port Size	G1/4"		G3/8"	G1/2"
工作介质/Working Medium	空气/Air			
调压范围/Adjustable Pressure Range	0.05-0.85Mpa			
最高使用压力/Max Working Pressure	0.95Mpa			
保证耐压力/Ensured Pressure Resistance	1.5Mpa			
环境及流体温度/Environment & Fluid Temperature	-5-60℃(但未冻结)/(Not Frozen)			
滤水杯容量/Capacity of Filter Cup	15CC		60CC	

AF.BF系列空气过滤器/AF.BF Series Air Filter

订购代码/Ordering Code

BF

 系列
 Series
 AF:小型/Small Size
 BF:大型/Large Size

3000

 接管口径
 Port Size
 2000:G1/4"
 3000:G3/8"
 4000:G1/2"

D

 排水方式
 Drain Type
 空白:标准手动式
 Blank: Manual Drain Type
 D:自动排水
 D:Auto Drain Type

AF2000

BF4000

规格/Specification

型号 /Model	AF2000	BF2000	BF3000	BF4000
接管口径/Port Size	G1/4"		G3/8"	G1/2"
工作介质/Working Medium	空气/Air			
过滤精度/Filter Precision	40 μm			
保证耐压力/Ensured Pressure Resistance	1.5Mpa			
环境及流体温度/Environment & Fluid Temperature	-5-60℃(但未冻结)/(Not Frozen)			
滤水杯容量/Capacity of Filter Cup	15CC		60CC	

AR.BR系列减压阀/AR.BR Series Regulator

订购代码/Ordering Code



AR2000



BR4000

规格/Specification

型号/Model	AR2000	BR2000	BR3000	BR4000
接管口径/Port Size	G1/4"		G3/8"	G1/2"
工作介质/Working Medium	空气/Air			
调压范围/Adjustable Pressure Range	0.05-0.85Mpa			
最高使用压力/Max Working Pressure	0.95Mpa			
保证耐压力/Ensured Pressure Resistance	1.5Mpa			
环境及流体温度/Environment & Fluid Temperature	-5-60℃(但未冻结)/(Not Frozen)			
本体材质/Body Material	铝合金压铸成型/Aluminum alloy die-casting molding			

AL.BL系列油雾器/AL.BL Series Lubricator

订购代码/Ordering Code



AL2000



BL2000

规格/Specification

型号/Model	AL2000	BL2000	BL3000	BL4000
接管口径/Port Size	G1/4"		G3/8"	G1/2"
工作介质/Working Medium	空气/Air			
保证耐压力/Ensured Pressure Resistance	1.5Mpa			
环境及流体温度/Environment & Fluid Temperature	-5-60℃(但未冻结)/(Not Frozen)			
建议润滑油/Recommended Oil	ISOVG32或同级用油/ISOVG32 or Same Grade Oil			
给油杯容量/Capacity of Oil Cup	25CC		90CC	
材质/ Material	本体/Body			
	容杯/Cup			
	保护杯罩/Protective Cover			
	NO		铁/Iron	

GFC系列三联件/GFC Series Ari Combination(F.R.L Combination)
 **订购代码/Ordering Code**

G	C	200	—	01	—	D	—	<input type="checkbox"/>
系列 Series	功能 Function C:三联件 C:F.R.L Combination FC:二联件 FC:FR.L Combination FR:过滤减压阀 FR:Filter & Regulator F:过滤器 F:Filter R:减压阀 R:Regulator L:油雾器 L:Lubricator	规格代码 Specification Code 200 300 400		接管口径 Port Size 01:G1/8" 02:G1/4" 03:G3/8" 04:G1/2"		排水方式 Drain Type 空白:差压排水 Blank:Pressure Drain D:自动排水 D: Auto Drain Type		压力范围 Pressure Range 空白:标准型 Blank:Standard L:低压型 L: Low-Pressure Type


GC三联件

GFC二联件

GFR过滤减压阀

GR减压阀

GF过滤器

GL油雾器
 **规格/Specification**

型号 /Model	GC200-01	GC200-02	GC300-02	GC300-03	GC400-03	GC400-04	
工作介质/Working Medium	空气/Air						
接管口径/Port Size	G1/8"	G1/4"	G1/4"	G3/8"	G3/8"	G1/2"	
过滤精度/Filter Precision	40μm 或5μm						
调压范围/Adjustable Pressure Range	自动及差压排水式Auto Drain : 0.15~0.9Mpa(20~130psi);手动排水式 Manual Drain : 0.05~0.9Mpa(7~13psi)						
最高使用压力/Max Working Pressure	1.0Mpa(145psi)						
保证耐压力/Ensured Pressure Resistance	1.5Mpa(215psi)						
环境及流体温度/Environment & Fluid Temperature	5~60°C						
滤水杯容量/Capacity of Filter Cup	10CC		40CC		80CC		
给油杯容量/Capacity of Oil Cup	25CC		75CC		160CC		
构成元件/ Components	空气过滤器/Filter	GF200-01	GF200-02	GF300-02	GF300-03	GF400-03	GF400-04
	减压阀/Regulator	GR200-01	GR200-02	GR300-02	GR300-03	GR400-03	GR400-04
	油雾器/Lubricator	GL200-01	GL200-02	GL300-02	GL300-03	GL400-03	GL400-04

GFC系列二联件/GFC Series Ari Combination(FR.L Combination)

规格/Specification

型号 /Model	GFC200-01	GFC200-02	GFC300-02	GFC300-03	GFC400-03	GFC400-04	
工作介质/Working Medium	空气/Air						
接管口径/Port Size	G1/8"	G1/4"	G1/4"	G3/8"	G3/8"	G1/2"	
过滤精度/Filter Precision	40 μm 或 5 μm						
调压范围/Adjustable Pressure Range	自动及差压排水式:0.15~0.9Mpa(20~130psi);手动排水式:0.05~0.9Mpa(7~130psi)						
最高使用压力/Max Working Pressure	1.0Mpa(145psi)						
保证耐压力/Ensured Pressure Resistance	1.5Mpa(215psi)						
环境及流体温度/Environment & Fluid Temperature	-20~70℃						
滤水杯容量/Capacity of Filter Cup	10CC		40CC		80CC		
给油杯容量/Capacity of Oil Cup	25CC		75CC		160CC		
构成元件/ Components	调压过滤器/Filter&Regulator	GFR200-01	GFR200-02	GFR300-02	GFR300-03	GFR400-03	GFR400-04
	油雾器/Lubricator	GL200-01	GL200-02	GL300-02	GL300-03	GL400-03	GL400-04

GFR系列过滤减压阀/GFR Series Filter & Regulator

规格/Specification

型号 /Model	GFR200-01	GFR200-02	GFR300-02	GFR300-03	GFR400-03	GFR400-04
工作介质/Operating Fluid	空气/Air					
接管口径/Port Size	G1/8"	G1/4"	G1/4"	G3/8"	G3/8"	G1/2"
过滤精度/Filter Precision	40 μm 或 5 μm					
调压范围/Adjustable Pressure Range	自动及差压排水式:0.15~0.9Mpa(20~130psi);手动排水式:0.05~0.9Mpa(7~130psi)					
保证耐压力/Ensured Pressure Resistance	1.5Mpa(215psi)					
环境及流体温度/Environment & Fluid Temperature	-20~70℃					
滤水杯容量/Capacity of Filter Cup	10CC		40CC		80CC	

GF系列空气过滤器/GF Series Air Filter

规格/Specification

型号 /Model	GF200-01	GF200-02	GF300-02	GF300-03	GF400-03	GF400-04
工作介质/Operating Fluid	空气/Air					
接管口径/Port Size	G1/8"	G1/4"	G1/4"	G3/8"	G3/8"	G1/2"
过滤精度/Filter Precision	40 μm 或 5 μm					
调压范围/Adjustable Pressure Range(Mpa)	自动及差压排水式:0.15~0.9Mpa(20~130psi);手动排水式:0.05~0.9Mpa(7~130psi)					
保证耐压力/Ensured Pressure Resistance	1.5Mpa(215psi)					
环境及流体温度/Environment & Fluid Temperature	-20~70℃					
滤水杯容量/Capacity of Filter Cup	10CC		40CC		80CC	

GR系列减压阀/GR Series Regulator

规格/Specification

型号 /Model	GR200-01	GR200-02	GR300-02	GR300-03	GR400-03	GR400-04
工作介质/Working Medium	空气/Air					
接管口径/Port Size	G1/8"	G1/4"	G1/4"	G3/8"	G3/8"	G1/2"
调压范围/Adjustable Pressure Range	自动及差压排水式:0.15~0.9Mpa(20~130psi);手动排水式:0.05~0.9Mpa(7~130psi)					
保证耐压力/Ensured Pressure Resistance	1.5Mpa(215psi)					
环境及流体温度/Environment & Fluid Temperature	5~60℃					


GL系列油雾器/GL Series Lubricator

规格/Specification

型号 /Model	GL200-01	GL200-02	GL300-02	GL300-03	GL400-03	GL400-04
工作介质/Working Medium	空气/Air					
接管口径/Port Size	G1/8"	G1/4"	G1/4"	G1/2"	G3/8"	G1/2"
调压范围/Adjustable Pressure Range	0.05~0.9Mpa(215~130psi)					
保证耐压力/Ensured Pressure Resistance	1.5Mpa(215psi)					
环境及流体温度/Environment & Fluid Temperature	5~60℃					
给油杯容量/Capacity of Oil Cup	ISO VG 30或同级用油/ISO VG 30 or The Oil					
建议用油/Recommended Oil	25CC		75CC		160CC	

OU系列二联件/OU Series Ari Filter Combination(FR.L Combination)

订购代码/Ordering Code

O	U	1/4			MINI
系列 Series	功能 Function U:二联件 U:FR.L Combination FR:过滤减压阀 FR:Filter & Regulator F:过滤器 F:Filter R:减压阀 R:Regulator L:油雾器 L:Lubricator	接口尺寸 Port Size G1/8" G1/4" G3/8" G1/2" G3/4" G1"	过滤等级 Grade of Filtration 空白/Blank:40um 5M:5um	压力表 Manometer 空白/Blank:12bar 7: 7bar	尺寸Size MINI 小型 MIDI 中型 MAXI 大型



OU二联件



OFR过滤减压阀



OF过滤器



OL油雾器



OR减压阀

规格/Specification

过滤减压阀/Filter Regulators		MINI型			MIDI型			MAXI型	
手动排水阀 Manual Valve	工作压力 Working pressure:12bar,40 μm	OU-1/8-MINI	OU-1/4-MINI	OU-3/8-MINI	OU-3/8-MIDI	OU-1/2-MIDI	OU-3/4-MIDI	OU-3/4-MAXI	OU-1-MAXI
	工作压力 Working pressure:12bar,40 μm	OU-1/8-7-MINI	OU-1/4-D-7-MINI	OU-3/8-7-MINI	OU-3/8-7-MIDI	OU-1/2-7-MIDI	OU-3/4-7-MIDI	OU-3/4-7-MAXI	OU-1-7-MAXI
	工作压力 Working pressure:12bar,40 μm	OU-1/8-5M-MINI	OU-1/4-5M-MINI	OU-3/8-5M-MINI	OU-3/8-5M-MIDI	OU-1/2-5M-MIDI	OU-3/4-5M-MIDI	OU-3/4-5M-MAXI	OU-1-5M-MAXI
压力表 Manometer	0~12bar	OMA-40-16-1/8			OMA-50-16-1/4				
	0~7bar	OMA-40-10-1/8			OMA-50-10-1/4				
工作介质/Working Medium		压缩空气 / Compressed air							
结构特点/Features of Structure		带水分离器的烧结式过滤器: MINI/MIDI; 膜片式减压阀: MAXI; 活塞减压阀 / Sintered filter with water separator; MINI/MIDI: Diaphragm type regulator;							
安装方式/Mounting Type		管式安装或支架安装 / Pipe mounting or foot mounting							
安装位置/Assembly Position		垂直方向±5° / Vertical ±5°							
连接尺寸/Dimension		G1/8"	G1/4"	G3/8"	G3/8"	G1/2"	G3/4"	G3/4"	G1"
标准额定流量 Standard Nominal Flow Rate	OU-...(-A)	750	1400	1600	3100	3400	3400	9000	10000
	OU-...-7(-A)	900	1500	1700	3400	3900	4000	9500	16000
	OU-...-5M(-A)	650	1200	1350	2400	2500	2600	7300	7600
输入压力 Primary Pressure	手动排水阀 Manual Valve Drain	1~16bar							
工作压力/Working Pressure		0.5~12bar/0.5~7bar							
最小起雾容量/Min. Standard Nominal Flow Rate		31 L/min			61 L/min			10 L/min	
过滤精度/Filter Precision		40um/5um							
最大凝度容量/Capacity of Condensate Fluid		22ml							
温度范围/Temperature Range		0~60℃							
材料/Materials Information		壳体: 压铸锌; 过滤杯: PC; 金属保护罩: 铝合金; 密封: 丁腈橡胶; 调压手轮: POM Housing: Zinc Die-casting; Filter Bowl: PC; Metal Bowl Guard: Aluminium Alloy; Sealing: NBR; Adjusting Knob: POM							

OFR系列过滤减压阀/OFR Series Filter & Regulator

规格/Specification

过滤减压阀/Filter regulators		MINI型			MIDI型			MAXI型	
手动排水阀 Manual Valve	工作压力 Working pressure:12bar,40 μ m	OFR-1/8-MINI	OFR-1/4-MINI	OFR-3/8-MINI	OFR-3/8-MIDI	OFR-1/2-MIDI	OFR-3/4-MIDI	OFR-3/4-MAXI	OFR-1-MAXI
	工作压力 Working pressure:12bar,40 μ m	OFR-1/8-7-MINI	OFR-1/4-D-7-MINI	OFR-3/8-7-MINI	OFR-3/8-7-MIDI	OFR-1/2-7-MIDI	OFR-3/4-7-MIDI	OFR-3/4-7-MAXI	OFR-1-7-MAXI
	工作压力 Working pressure:12bar,40 μ m	OFR-1/8-5M-MINI	OFR-1/4-5M-MINI	OFR-3/8-5M-MINI	OFR-3/8-5M-MIDI	OFR-1/2-5M-MIDI	OFR-3/4-5M-MIDI	OFR-3/4-5M-MAXI	OFR-1-5M-MAXI
压力表 Manometer	0~12bar	OMA-40-16-1/8			OMA-50-16-1/4				
	0~7bar	OMA-40-10-1/8			OMA-50-10-1/4				
工作介质/Working Medium		压缩空气/Compressed Air							
结构特点/Features of Structure		带水分离器的烧结式过滤器; MINI/MIDI:膜片式减压阀; MAXI:活塞减压阀 Sintered Filter With Water Sparator;MINI/MID:Diaphragm type regulator;MAXI:Piston Regulator							
安装方式/Mounting Type		管式安装或支架安装/Pipe Mounting of Foot Mounting							
安装位置/Assembly Position		垂直方向±5° / Vertical ±5°							
连接尺寸/Dimension		G1/8"	G1/4"	G3/8"	G3/8"	G1/2"	G3/4"	G3/4"	G1"
标准额定流量 Standard Nominal Flow Rate	OFR-...(-A)	750	1400	1600	3100	3400	3400	9000	10000
	OFR-...-7(-A)	900	1500	1700	3400	3900	4000	9500	16000
	OFR-...-5M(-A)	650	1200	1350	2400	2500	2600	7300	7600
输入压力 Primary Pressure	手动排水阀 Manual Valve drain	1~16bar							
工作压力/Working Pressure		0.5~12bar/0.5~7bar							
过滤精度/Filter Precision		40um/5um							
最大凝度容量/Capacity of Condensate Fluid		22ml							
温度范围/Temperature Range		0~60℃							
材料/Materials Information		壳体:压铸锌; 过滤杯:PC; 金属保护罩:铝合金; 密封:丁腈橡胶; 调压手轮:POM Housing:Zinc Die-casting;Filter Bowl:PC;Meta Bowl Guard:Aluminium Alloy;Sealing:NBR;Adjusting Knob:POM							

OF系列空气过滤器/OF Series Air Filter

规格/Specification

过滤器/Filters		MINI型			MIDI型			MAXI型	
40 μ m	手动排水阀 Manual Valve Drain	OF-1/8-MINI	OF-1/4-MINI	OF-3/8-MINI	OF-3/8-MIDI	OF-1/2-MIDI	OF-3/4-MIDI	OF-3/4-MAXI	OF-1-MAXI
5 μ m		OF-1/8-5M-MINI	OF-1/4-5M-MINI	OF-3/8-5M-MINI	OF-3/8-5M-MIDI	OF-1/2-5M-MIDI	OF-3/4-5M-MIDI	OF-3/4-5M-MAXI	OF-1-5M-MAXI
工作介质/Working Medium		压缩空气/Compressed Air							
结构特点/Features of Structure		带水分离器的烧结式过滤器/Sinterded filter with water sparator							
安装方式/Mounting Type		管式安装或支架安装/Pipe mounting or foot mounting							
安装位置/Assembly Position		垂直方向±5° / Vertical ±5°							
连接尺寸/Connection Dimension		G1/8"	G1/4"	G3/8"	G3/8"	G1/2"	G3/4"	G3/4"	G1"
标准额定流量 Standard nominal flow rate	OF-...(-A)	1000	1200	1400	2700	3000	3000	5000	5300
	OF-...-5M(-A)	600	950	1100	1800	1900	1900	3200	3300
输入压力 Primary Pressure	手动排水阀 Manual Valve Drain	1~16bar							
过滤精度/Grade of Filtration		40um/5um							
最大凝度容量/Max.Condensate Capacity		22ml							
温度范围/Temperature Range		0~60℃							
材料/Materials Information		壳体:压铸锌; 过滤杯:PC; 金属保护罩:铝合金; 密封:丁腈橡胶 Housing:Zinc Die-casting;Filter Bowl:PC;Metal Bowl Guard:Aluminium Alloy;Sealing:NBR							

OR系列减压阀/OR Series Regulator

规格/Specification

减压阀/Regulators		MINI型			MIDI			MAXI	
工作压力/Working pressure 12bar		OR-1/8-MINI	OR-1/4-MINI	OR-3/8-MINI	OR-3/8-MIDI	OR-1/2-MIDI	OR-3/4-MIDI	OR-3/4-MAXI	OR-1-MAXI
工作压力/Working pressure 7bar		OR-1/8-7-MINI	OR-1/4-7-MINI	OR-3/8-7-MINI	OR-3/8-7-MIDI	OR-1/2-7-MIDI	OR-3/4-7-MIDI	OR-3/4-7-MAXI	OR-1-7-MAXI
压力表 Manometer	0~12bar	OMA-40-16-1/8			OMA-50-16-1/4				
	0~7bar	OMA-40-10-1/8			OMA-50-10-1/4				
工作介质/Working Medium		过滤压缩空气(润滑或未润滑)/Compressed air(Lubricated or Unlubricated)							
结构特点/Features of Structure		MINI/MIDI:膜片式减压阀 MINI/MIDI: Diaphragm type regulator;					MAXI: 活塞式减压阀 MAXI: Piston regulator		
安装方式/Mounting Type		管式安装、支架安装或面板式安装/Pipe / Foot / Plate Mounting							
安装位置/Assembly Position		任意/Any							
连接尺寸/Dimension		G1/8"	G1/4"	G3/8"	G3/8"	G1/2"	G3/4"	G3/4"	G1"
标准额定流量 Standard Nominal Flow rate	OR-...	800	1500	1700	3200	3500	3500	11000	11500
	OR-...-7-	1000	1600	1800	3300	4000	4500	12000	12500
输入压力/Input Pressure		1~16bar							
工作压力/Working Pressure		0.5~12bar/0.5~7bar							
温度范围/Temperature Range		0~60℃							
材料/Materials Information		壳体: 压铸锌; 密封: 丁腈橡胶; 调压手轮: POM Housing: Zinc Die-casting; Sealing: NBR; Adjusting Knob: POM							

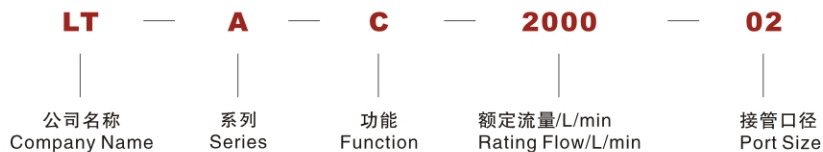
OL系列油雾器/OL Series Lubricator

规格/Specification

油雾器/Lubricators		MINI型			MIDI型			MAXI型	
工作压力/Working Pressure 12bar		OL-1/8-MINI	OL-1/4-MINI	OL-3/8-MINI	OL-3/8-MIDI	OL-1/2-MIDI	OL-3/4-MIDI	OL-3/4-MAXI	OL-1-MAXI
工作介质/Working Medium		压缩空气/Compressed air(Lubricated or Unlubricated)							
结构特点/Features of Structure		油雾型自动可变节流式/The direct constant-density lubricator							
安装方式/Mounting Type		管式安装或支架安装/Pipe or Foot Mounting							
安装位置/Assembly Position		垂直方向±5° / Vertical ±5°							
连接尺寸/Connection Dimension		G1/8"	G1/4"	G3/8"	G3/8"	G1/2"	G3/4"	G3/4"	G1"
标准额定流量/Standard Nominal Flow Rate		1300	2300	2700	5500	6100	6300	8400	9000
最大工作压力/Max.Working Pressure		16bar							
最小起雾流量/Min.Standard Nominal Flow Rate		31 L/min			61 L/min			101 L/min	
最大凝度容量/Max.condensate Capacity		22ml							
温度范围/Temperature Range		0~60℃							
材料/Materials Information		壳体: 压铸锌; 油杯和视油器: PC; 金属保护罩: 铝合金; 密封: 丁腈橡胶 Housing: Zinc Die-casting; Oil Bowl and Drip Cap :PC; Metal Bowl Guard: Aluminium Alloy; Sealing: NBR							
推荐用油/Recommended Oil		ISO VG 32 或同级用油 ISO VG 32 or the same grade							

LTAC活塞式空气组合元件 /LTAC Piston Air Filter Combination

AA® 订购代码/Ordering Code



LTAW2000-02



LTAC2010-02



LTAC2000-02

AA® 规格/Specification

型号/Model	LTAC2000	LTAC2010	LTAW2000
接管口径/Port Size		G1/4"	
额定流量/Rating Flow		500L/min	
最高使用压力/Max Working Pressure		1.0Mpa	
保证耐压力/Ensured Pressure Resistance		1.5Mpa	
过滤精度/Filter Precision		25um(5um 50um)	
调压范围/Adjustable Pressure Range		0.05-0.85Mpa	
环境及流体温度/Environment & Fluid Temperature		-5~60℃(但未冻结)/(Not Frozen)	
建议用油/Recommended Oil		透平1号油/TURBINE NO.1 Oil	
保护杯罩/Protective Cover		无/NO	
压力表/Gauge		G36-10-01	

气源处理件/Air Source Treatment Unit



39系列气源处理件

该系列气源处理件是引进海隆基型，包括过滤器、减压阀、过滤减压阀、油雾器以及它们组成的二联件、三联件。采用标准化的模块设计，能任意组合和分解，产品设计合理，调整方便。

接管口径：G1/8~G1

使用压力：0.05~1.0Mpa

适用温度：-5~50℃

39 Series Air Source Treatment Unit

The series air source treatment unit is introduced from hailong type, including filter, regulator filter+regulator, lubricator, and their combined dyad or triplet, it is standard modular design and can be freely separated and combined. It is in reasonable design and easy adjustment.

Port Size: G1/8~G1

Working pressure: 0.05~1.0Mpa

Applicable temperature: -5~50℃

Q系列气源处理件

该系列气源处理件是机械工业部联合设计型，包括过滤器、减压阀、油雾器以及它们组成的三联件。产品采用较大面积的膜片结构，压力特性和流量特性好，性能可靠，使用寿命长。

接管口径：G1/8~G2

使用压力：0.05~0.8Mpa

适用温度：-5~50℃

Q Series Air Source Treatment Unit

The series air source treatment unit is jointly designs with Ministry of Machine-Building industry, including filter, regulator, lubricator, and their combined dyad or triple, it is adopted large-areadiaphragm structure with high pressure and flow rate, reliable performance and long service life.

Port Size: G1/8~G2

Working pressure: 0.05~0.8Mpa

Applicable temperature: -5~50℃



高压系列气源处理件

该高压系列气源处理件是自主开发产品，是对高压的使用环境，专门设计，已成熟地应用于吹瓶机等各种高压气动系统设备中。

接管口径：G1/8~G1

使用压力：0.05~3.5Mpa

适用温度：-5~50℃

High Pressure Series Air Source Treatment Unit

The High-pressure series air source treatment unit is developed independently and specially designed for high-pressure environment. It has been widely applied to all kinds of high-pressure pneumatic system such as bottle blowers.

Port Size: G1/8~G1

Working pressure: 0.05~3.5Mpa

Applicable temperature: -5~50℃