



LTPC[®]
恒敏灵通气动

宁波恒敏灵通气动成套有限公司

NINGBO HENGMIN LINGTONG PNEUMATIC COMPONENTS&SET CO.,LTD

地址:浙江省宁波市溪口镇公棠工业区 P. C: 315501

ADD: Gongtang Industrial Zone, Xikou, Ningbo, Zhejiang, China

TEL: +86-574-88850982

FAX: +86-574-88853982

Http://www.ltqd.com

E-mail: sales@ltqd.com



官网



公众号

www.ltqd.com

2019



LTOGA/LTOGB系列标准气缸/TQGA/LTOGB Series Standard Cylinder

订购代码/Ordering Code

LTQGA

50

100

S

MF1

型号/Model
LTQGA:无缓冲
LTQGB:带缓冲

缸径/Bore

行程/Stroke

磁石
Magnet
空白:不附磁石
Blank:Without Magnet
S:附磁石
S:With Magnet

固定形式/Mounting Type
空白:基本型/Blank:Basic Type
MF1:前法兰式
MF1:Front Flange Type
MF2:后法兰式
MF2:Rear Flange Type
MP4:尾部单耳环
MP4:Single Earring Type
MP2:尾部双耳环
MP2:Double Earring Type
MS1:脚架式
MS1:Foot Seat Type
MT4:中间轴销式
MT4:Swinging Type



LTOGB50X50

规格/Specification

缸径/Bore(mm)	32	40	50	63	80	100	125	160	200	250	320
行程/Stroke	25~1000mm										
工作压力/Working Pressure	0.1~1.0Mpa										
保证耐压力/Ensured Pressure Resistance	1.5Mpa										
工作温度/Operating Temperature	-10~70°C(但未冻结 No freezing)										
使用速度范围/Operating Speed Range	30~800mm/s										

SC系列标准气缸/SC Series Standard Cylinder

订购代码/Ordering Code

SC

50

100

10

S

FA

缸径/Bore 行程/Stroke

磁石
Magnet
空白:不附磁石
Blank:Without Magnet
S:附磁石
S:With Magnet

可调行程
Adjust Stroke

型号/Model
SC 标准气缸(拉杆式)
SC Standard Cylinder (Tie-Rod Type)
SCD:双轴复动型 Double Shaft Double Action(Tie-Rod Type)
SCD:Double-shaft and Double-acting Type
SCJ:双轴可调行程型
SCJ:Double-shaft Adjustable Stroke Type
Double Shaft Double Action Adjustable(Tie-Rod Type)
SU:标准复动型 (无拉杆式)
SU:Stand Double Action (Micky Mouse Type)

固定形式/Mounting Type
空白:基本型/Blank:Basic Type
LB型:前后固定型
LB:Front and Rear Fixed Type (Foot Bracket)
FA型:前盖固定型 (前法兰)
FA:Front Cover Fixed Type(Front Flange)
FB型:后盖固定型 (后法兰)
FB:Rear Cover Fixed Type(Rear Flange)
CA型:后盖固定型 (单耳环)
CA:Rear Cover Fixed Type(Single Earring)
CB型:后盖固定型 (双耳环)
CB:Rear Cover Fixed Type(Double Earring)
TC型:中间轴销式
TC:Swinging Type
TC-M型:中间支座式
TC-M:Swinging Type with Foot Seat



SC50X50

规格/Specification

缸径/Cylinder (mm)	32	40	50	63	80	100	125	160	200	250	320
行程/Stroke	25~1000mm										
工作压力/Working Pressure	0.1~1.0Mpa										
保证耐压力/Ensured Pressure Resistance	1.5Mpa										
工作温度/Working Temperature	-10~70°C(但未冻结 No freezing)										
使用速度范围/Operating Speed Range	30~800mm/s										

SCL自锁型气缸/SCL Series Lockable Cylinder

订购代码/Ordering Code

SCL — B — 63 — 100 — S — FA

自锁位置/Lock Position B:后盖自锁/B:Back cover with lock F:前盖自锁/F:Front cover with lock	缸径 Bore 行程 Stroke	磁石/Magnet 空白:不附磁石 Blank:Without Magnet S:附磁石 S:With Magnet	固定形式/Mounting Type 空白:基本型/Blank:Basic Type FA:前盖固定型(前法兰)/FA:Front Cover Fixed Type(Front Flange) FB:后盖固定型(后法兰)/FB:Rear Cover Fixed Type(Rear Flange) CA:后盖固定型(单耳环)/CA:Rear Cover Fixed Type(Single Earring) CB:后盖固定型(双耳环)/CB:Rear Cover Fixed Type(Double Earring)
---	----------------------	--	---

型号/Model
 SCL:圆形铝合金缸管,支柱螺帽锁紧
 SCL:Cylindrical pipe of aluminium alloy prop screw locking
 SUL:米字形铝合金缸管,螺钉锁紧
 SUL:Cross-road cylinder pipe of aluminium alloy fine screw locking



规格/Specification

缸径/Bore(mm)	40	50	63	80	100
行程/Stroke	25~1000mm				
工作介质/Working Medium	空气 Clean Air				
动作方式/Acting Type	复动型/Double Action				
固定形式 / Mounting Type	基本型/Basic type FA FB CA CB				
工作压力/Working Pressure	0.1~1.0Mpa				
保证耐压力/Ensured Pressure Resistance	1.5MPa				
工作温度/Working Temperature	-10~70℃(但未冻结 No freezing)				
使用速度范围/Operating Speed Range	30~800mm/s				
缓冲型式/Cushion Type	可调/Adjustable Cushion				
接管口径/Port Size	G1/4"		G3/8"		G1/2"

SI系列标准气缸(ISO15552标准) /SI Series standard cylinder

订购代码/Ordering Code

SI — 50 — 100 — 10 — S — FA

缸径 Bore 行程 Stroke 可调行程 Adjust Stroke	磁石/Magnet 空白:不附磁石 Blank:Without Magnet S:附磁石/S:With Magnet	固定形式 / Mounting Type 空白:基本型/Blank:Basic Type FA:前盖固定型(前法兰)/FA:Front Cover Fixed Type(Front Flange) FB:后盖固定型(后法兰)/FB:Rear Cover Fixed Type(Rear Flange) CA:后盖固定型(单耳环)/CA:Rear Cover Fixed Type(Single Earring) CB:后盖固定型(双耳环)/CB:Rear Cover Fixed Type(Double Earring)
--	---	---

型号/Model
 SI 标准气缸
 SI Standard Cylinder
 SID:双轴复动型 Double Shaft Double Action(Tie-Rod Type)
 SID:Double-shaft and Double-acting Type
 SIJ:行程可调型
 SIJ:Double shaft Adjustable Type



规格/Specification

缸径/Bore(mm)	32	40	50	63	80	100	125
行程/Stroke	25~1000mm						
工作介质/Working Medium	空气/Clean Air						
动作方式/Acting Type	复动型/Double Action						
固定形式 / Mounting Type	基本型/Basic type FA FB CA CB						
工作压力/Working Pressure	0.1~1.0Mpa						
保证耐压力/Ensured Pressure Resistance	1.5MPa						
工作温度/Working Temperature	-10~70℃(但未冻结 No freezing)						
使用速度范围/Operating Speed Range	50~800mm/s						
缓冲型式/Cushion Type	可调缓冲 / Adjustable Cushion						
接管口径/Port Size	G1/8"	G1/4"	G3/8"		G1/2"		

DNC系列标准气缸/DNC Series Standard Cylinder

订购代码/Ordering Code

DNC

型号/Model
标准气缸 (拉杆式)
DNC Standard Cylinder:
(Pull Rod Type)

50

缸径
Bore

100

行程/Stroke

S

磁石
Magnet
空白:不附带磁石
Blank:Without Magnet
S:附磁石
S:With Magnet

FA

固定形式/Mounting Type
空白:基本型/Blank:Basic Type
LB型:前后固定型
LB:Front and Rear Fixed Type (Foot Bracket)
FA型:前盖固定型 (前法兰)
FA:Front Cover Fixed Type(Front Flange)
FB型:后盖固定型 (后法兰)
FB:Rear Cover Fixed Type(Rear Flange)
CA型:后盖固定型 (单耳环)
CA:Rear Cover Fixed Type(Single Earring)
CB型:后盖固定型 (双耳环)
CB:Rear Cover Fixed Type(Double Earring)
TC型:中间轴销式
TC:Swinging Type
TC-M型:中间支座式
TC-M:Swinging Type with Foot Seat



规格/Specification

缸径/Bore(mm)	32	40	50	63	80	100	125
行程/Stroke	25~1000mm						
工作压力/Working Pressure	0.1~1.0Mpa						
保证耐压力/Ensured Pressure Resistance	1.5Mpa						
工作温度/Working Temperature	-10~70°C(但未冻结 No freezing)						
使用速度范围/Operating Speed Range	30~800mm/s						

LTN系列标准气缸/LTN Series Standard Cylinder

订购代码/Ordering Code

LTN

型号/Model
灵通标准缸(拉杆内藏式)
LTN Standard Cylinder: (Hidden Pull Rod Type)
LTND:双轴复动型 Double Shaft Double Action
LTND:Double-shaft and Double-acting Type
LTNJ:双轴复动可调型 Double Shaft Double Action Adjustable Type
LTNJ:Double-shaft, Double-acting and Adjustable Stroke Type
LTNT:多位置复动型
LTNT:Multi-position Double-Action Type

50

缸径
Bore

100

行程/Stroke

S

磁石
Magnet
空白:不附磁石
Blank:Without Magnet
S:附磁石
S:With Magnet

FA

固定形式/Mounting Type
空白:基本型/Blank:Basic Type
LB型:前后固定型
LB:Front and Rear Fixed Type (Foot Bracket)
FA型:前盖固定型 (前法兰)
FA:Front Cover Fixed Type(Front Flange)
FB型:后盖固定型 (后法兰)
FB:Rear Cover Fixed Type(Rear Flange)
CA型:后盖固定型 (单耳环)
CA:Rear Cover Fixed Type(Single Earring)
CB型:后盖固定型 (双耳环)
CB:Rear Cover Fixed Type(Double Earring)
TC型:中间轴销式
TC:Swinging Type
TC-M型:中间支座式
TC-M:Swinging Type with Foot Seat



规格/Specification

缸径/Bore(mm)	32	40	50	63	80	100
行程/Stroke	25~1000mm	25~1200mm		25~1500mm		
工作压力/Working Pressure	0.1~1.0Mpa					
保证耐压力/Ensured Pressure Resistance	1.5Mpa					
使用温度范围/Operating Temperature	-10~70°C(但未冻结 No freezing)					
使用速度范围/Operating Speed Range	30~800mm/s					

LTN系列吹瓶机专用气缸/LTN Series Special Cylinder For Bottle Blower

订购代码/Ordering Code

LTN — **63** × **50** — **32** × **360**

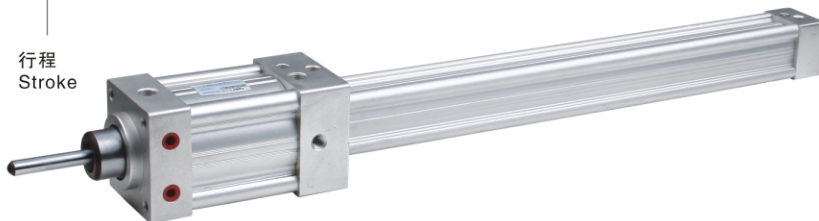
吹瓶气缸
Special Cylinder
For Bottle Blower

缸径(封口缸)
Bore(Sealing
Cylinder)

行程
Stroke

缸径(拉伸缸)
Bore(Draw
Cylinder)

行程
Stroke



吹瓶机专用气缸 Special Cylinder For Bottle Blower

专为吹瓶机配套设计，采用先封口后拉伸的结构，运动平稳使用寿命长。吹瓶效率高，已广泛成熟地应用于各吹瓶机行业。本公司考虑到该系列气缸安装方式多样，故客户订购时请说明安装方式及其它特殊要求。

It is specially designed for bottle blower machine. It adopts sealing firstly and then draw structure, easy motion, long service life, and high efficiency. It has been widely and maturely applied to high-pressure pneumatic system such as bottle blower industry. The special cylinder has many kinds of mounting type, so the clients should tell us mounting type and other special request before ordering.

规格/Specification

缸径/Bore(mm)(封口缸/Sealing Cylinder)	50-250					
行程/Stroke	30-100mm					
缸径/Bore(mm)(拉伸缸/Draw Cylinder)	32	40	50	63	80	100
行程范围/Stroke	100-1000mm					
工作压力/Working Pressure	0.1-1.0Mpa					
保证耐压力/Ensured Pressure Resistance	1.5Mpa					
工作温度/Working Temperature	-10-70℃(但未冻结 No freezing)					
使用速度范围/Operating Speed Range	30-800mm/s					

SDA系列薄型气缸/SDA Series Compact Cylinder

订购代码/Ordering Code

SDA — **50** × **20** — **S** — **B**

型号/Model
SDA:复动型 Double Action Type
SDA:Double Acting Type
SSA:单动伸出型
SSA:Single Action Extrusion Type
STA:单动引入型
STA:Single Action Drawing-in Type
SDAD:双轴复动型
SDAD:Double Shaft Double Action Type
SDAJ Series Double-acting and Adjustable Stroke Type

缸径
Bore

行程
Stroke

磁环/Magnet
空白:无磁环
Blank:Without Magnet
S:不附磁石
S:With Magnet

牙型/Cog Type
空白:内牙
Blank:Female Thread
B:外牙
B: Male Thread
N:无牙
N:No Thread



规格/Specification

缸径/Bore(mm)	20-32	40	50	63	80	100
行程范围/Stroke	5-30mm	5-50mm		10-50mm		
工作压力/Working Pressure	0.1-1.0Mpa					
保证耐压力/Ensured Pressure Resistance	1.5Mpa					
工作温度/Working Temperature	-10-70℃(但未冻结 No freezing)					
使用速度范围/Operating Speed Range	30-800mm/s					

MA系列不锈钢迷你缸/MA Series Stainless Steel Mini Cylinder

订购代码/Ordering Code

MA — **U** — **20** — **100** — **25** — **S** — **FA**

后盖型式/Back Cover Type
空白:摆尾型
Blank:Fishtail Type
U:平尾型/Horizontal Type
CM:圆尾型/Rounded Type

缸径
Bore

行程
Stroke

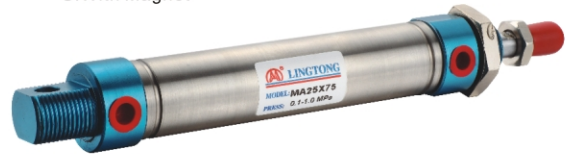
可调行程
Adjust Stroke
0~100mm

磁石
Magnet
空白:不附磁石
Blank:Without Magnet
S:附磁石
S:With Magnet

固定方式/Mounting Type
空白:基本型/Blank:Basic Type
LB型:前后固定型/LB:Front and Rear Fixed Type
FA型:前盖固定型/FA:Front Cover Fixed Type
SDB型:后盖摇摆式/SDB:Rear Cover Swinging Type

型号/Model

MA:复动型/MA:Double Action Type
MSA:单动伸出型/MSA:Single Action Extrusion Type
MTA:单动引入型/MTA:Single Action Drawing-in Type
MAD:双轴型/MAD:Double Shaft Type Double Shaft Type
MAJ:双轴可调型/MAJ:Double shaft Adjustable Type



规格/Specification

缸径/Bore(mm)	16	20	25	32	40
动作方式/Action Type	复动型或单动型/Double Acting or Single Acting				
行程/Stroke	10-500mm				
工作压力/Working Pressure	0.1-1.0Mpa				
保证耐压力/Ensured Pressure Resistance	1.5Mpa				
工作温度/Working Temperature	-10-70°C(但未冻结 No freezing)				
使用速度范围/Operating Speed Range	50-800mm/s				
缓冲形式/Cushion Type	缓冲垫片/Buffer Cushion				

MAL系列铝合金迷你缸/MAL Series Aluminium Alloy Mini Cylinder

订购代码/Ordering Code

MAL — **U** — **20** — **100** — **25** — **S** — **FA**

后盖形式/Back Cover Type
CA:摆尾型/CA:Fishtail Type
U:平尾型/U:Horizontal Type
CM:圆尾型/CM:Rounded Type

缸径
Bore

行程
Stroke

可调行程
Adjust Stroke
0~100mm

磁石/Magnet
空白:不附磁石
Blank:Without Magnet
S:附磁石
S:With Magnet

固定形式/Mounting Type
空白:基本型/Blank:Basic Type
LB型:前后固定型/LB:Front and Rear Fixed Type
FA型:前盖固定型/FA:Front Cover Fixed Type
SDB型:后盖摇摆式/SDB:Rear Cover Swinging Type

型号/Model

MAL:复动型/MAL:Double Action Type
MSAL:单动伸出型/MSAL:Single Action Extrusion Type
MTAL:单动引入型/MTAL:Single Action Drawing-in Type
MALD:双轴型/MALD:Double Shaft Type
MALJ:双轴可调型/MALJ:Double shaft Adjustable Type



规格/Specification

缸径/Bore(mm)	16	20	25	32	40
工作介质/Working Medium	空气/Air				
动作方式/Action Type	复动型或单动型/Double Acting or Single Acting				
行程范围/Stroke Range	10-500mm				
工作压力/Working Pressure	0.1-1.0Mpa				
保证耐压力/Ensured Pressure Resistance	1.5Mpa				
工作温度/Working Temperature	-10-70°C(但未冻结 No freezing)				
使用速度范围/Operating Speed Range	50-800mm/s				
缓冲形式/Cushion Type	缓冲垫片/Buffer Cushion				

LTTN系列双轴气缸/LTTN Series Double-Shaft Cylinder

订购代码/Ordering Code

LT	—	TN	—	20	—	100	—	S
公司名称 Company Name		型号/Model TN:双轴气缸 TN:Double-Shaft Cylinder		内径 Bore		行程 Stroke		感应磁石/Magnet 空白:不附磁石 Blank:Without Magnet S:附磁石 S:With Magnet



规格/Specification

缸径/Bore(mm)	10	16	20	25	32
行程/Stroke	0-100mm	0-200mm			
工作介质/Working Medium	空气/Clean Air				
动作方式/Acting Type	复动型/Double acting				
工作压力/Working Pressure	0.1~1.0Mpa				
保证耐压力/Ensured Pressure Resistance	1.5Mpa				
工作温度/Working Temperature	-5~70℃				
使用速度范围/Operating Speed Range	30~500 mm/s				
缓冲形式/Cushion Type	橡胶缓冲/Rubber Cushion				
接口螺纹/Port Size	M5x0.8				G1/8

LTCXSM系列双轴气缸 LTCXSM Series Double-Shaft Cylinder

订购代码/Ordering Code

LT	—	CXSM	—	25	—	100	—	S
公司名称 Company Name		型号/Model CXSM:双轴气缸 CXSM:Double Shaft		缸径 Bore		行程 Stroke		磁石/Magnet 空白:不附磁石 Blank:Without Magnet S:附磁石 S:With Magnet



规格/Specification

缸径/Cylinder(mm)	10	15	20	25	32
行程/Stroke	0~100mm	0~200mm			
工作介质/Working Medium	空气/Clean Air				
动作方式/Acting Type	复动型/Double acting				
工作压力/Working Pressure	0.1~1.0Mpa				
保证耐压力/Ensured Pressure Resistance	1.5Mpa				
工作温度/Working Temperature	-10~70℃(但未冻结 No freezing)				
使用速度范围/Operating Speed Range	30~500 mm/s				
可调行程/Adjust Stroke	-3~0				
缓冲型式/Cushion Type	橡胶缓冲/Rubber Cushion				
接口螺纹/Port Size	M5x0.8				G1/8"

LTMGPM系列三轴气缸/LTMGPM Series Three-Shaft Cylinder

订购代码/Ordering Code

LT — **MGPM** — **25** — **100** — **S**

公司名称
Company Name

型号/Model
MGPM:三轴气缸
MGPM:Three-Shaft Cylinder

缸径
Bore

行程
Stroke

磁石/Magnet
空白:不附磁石
Blank:Without Magnet
S:附磁石
S:With Magnet



规格/Specification

缸径/Bore(mm)	16	20	25	32	40	50	63
行程/Stroke	0-200mm		0-250mm				
工作介质/Working Medium	空气/Clean Air						
动作方式/Acting Type	复动型/Double acting						
工作压力/Working Pressure	0.1~1.0Mpa						
保证耐压力/Ensured Pressure Resistance	1.5Mpa						
工作温度/Working Temperature	-10~70°C(但未冻结 No freezing)						
使用速度范围/Operating Speed Range	30~500mm/s						
缓冲形式/Cushion Type	橡胶缓冲/Rubber Cushion						
活塞杆不转动精度/Precision of Piston with no Swiveling	滑动轴承/Slide Bearing						
	±0.08°	±0.07°		±0.06°		±0.05°	
接口螺纹/Port Size	M5x0.8		G1/8"			G1/4"	

LTMHZ2系列平行气爪 LTMHZ2 Parallel Type Gripper

订购代码/Ordering Code

LT — **MHZ2** — **20** — **S**

公司名称
Company Name

型号/Model
MHZ2:复动型
MHZ2:Action Type
MHZ2S:单动常开型
MHZ2S:Action
(Normally Open)
MHZ2C:单动常闭型
MHZ2C:Action
(Normally Close)

缸径
Bore

磁石
Magnet
S:附磁石
S:With Magnet



规格/Specification

缸径/Bore(mm)	10	16	20	25	32
工作介质/Working Medium	空气/Clean Air				
动作方式/Acting Type	复动型/Double acting 单动型/Single acting: 常开/Normally Open 常闭/Normally Close				
工作压力/Working Pressure	0.1~0.7Mpa				
工作温度/Working Temperature	-10~70°C(但未冻结 No freezing)				
润滑/Lubrication	不需要/Not Required				
接管口径/Port Size	M3x0.5		M5x0.8		

LTZH系列夹持气缸/LTZH Series Grip Cylinder

订购代码/Ordering Code

LT	ZH	A	25	100	S
公司名称 Company Name	型号/Model ZH:夹持气缸 Cylinder	夹持方向 Grip direction A:横向/Across B:纵向/Down	缸径 Bore	行程 Stroke S:张开宽度 S:Expand the width	磁石/Magnet 空白:不附磁石 Blank:Without Magnet S:附磁石 S:With Magnet



规格/Specification

缸径/Bore(mm)	10	15	20	25	32
行程/Stroke	0 ~ 60mm	0 ~ 80mm	0 ~ 100mm	0 ~ 120mm	0 ~ 160mm
工作压力/Working Pressure	0.1~1.0Mpa				
保证耐压力/Ensured Pressure Resistance	1.5Mpa				
工作温度/Working Temperature	-10~70℃(但未冻结 No freezing)				
使用速度范围/Operating Speed Range	30 ~ 500mm/s				
缓冲形式/Cushion Type	橡胶缓冲/Rubber Cushion				
接口螺纹/Port Size	M5x0.8			G1/8"	

LTRMS系列无杆气缸 LTRMS Series Rodless Cylinder

订购代码/Ordering Code

LT	RMS	25	100
公司名称 Company Name	型号/Model RMS:磁耦合式无杆气缸 RMS:Magnetically Coupled Rodless Cylinder	缸径 Bore	行程 Stroke



规格/Specification

缸径/Bore(mm)	16	20	25	32	40	50	63
行程/Stroke	0 ~ 500mm	0 ~ 1000mm			0 ~ 2000mm		
工作介质/Working Medium	空气/Clean Air						
动作形式/Acting Type	复动型/Double acting						
工作压力/Working Pressure	0.1~0.7Mpa						
保证耐压力/Ensured Pressure Resistance	1.5Mpa						
工作温度/Working Temperature	-10~70℃(但未冻结 No freezing)						
使用速度范围/Operating Speed Range	50 ~ 400 mm/s						
缓冲型式/Cushion Type	橡胶缓冲/Rubber Cushion						
润滑/Lubrication	不需要/Not Required						
接口螺纹/Port Size	M5x0.8	G1/8"			G1/4"		

LTSTMB系列滑台气缸/LTSTMB Series Slide Cylinder

订购代码/Ordering Code

LT	STMB	20	50	A
公司名称 Company Name	型号/Model STMB:滑台气缸 STMB:Slide Cylinder	缸径/Bore	行程/Stroke	缓冲装置 Cushion Type A:油压缓冲器 A:Shock Absorber B:行程可调螺丝 B:Stroke Adjustable Screw



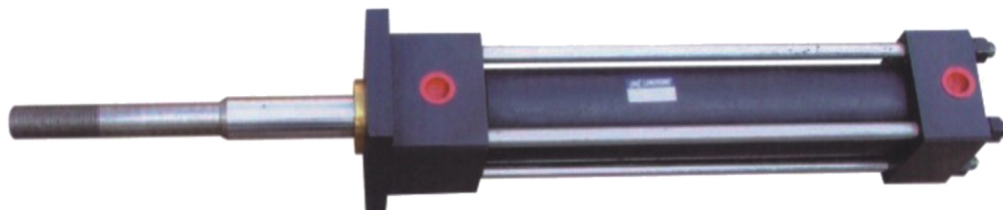
规格/Specification

缸径/Bore(mm)	10	16	20	25
工作介质/Working Medium	空气/ Clean Air			
动作方式/Acting Type	复动型/ Double acting			
工作压力/Working Pressure	0.1-1.0Mpa			
保证耐压力/Ensured Pressure Resistance	1.5Mpa			
工作温度/Working Temperature	-10-70℃(但未冻结 No freezing)			
使用速度范围/Operating Speed Range	30-500mm/s			
缓冲形式/Cushion Type	NO	油压缓冲器/Shock Absorber		
活塞杆不转动精度/Precision of Piston with no Swiveling	±0.1°			±0.05°
接口螺纹/Port Size	M5x0.8			G1/8"

LTYG系列油压缸/LTYG Series Hydraulic Cylinder

LTYG系列油压缸/Ltyg Series Hydraulic Cylinder

- | | |
|---|--|
| 1.本产品可与JISB8354-1992标准安装形式及尺寸的油缸直接互相使用。 | 1)LTYG Series can be Interchanged Directly with the Hydraulic Cylinder (the mounting type and dimension of JISB8354-1992). |
| 2.结构紧凑而简单, 与其他同等压力级油缸比体积小。 | 2) Compact and Simple Form, Small Cubic Measure. |
| 3.安装形式多样而容易变换,易装易拆。 | 3) Many kinds of Mounting Type, Easy Mounting and Disassemble. |
| 4.活塞杆镀铬, 单边铬层厚度为0.03~0.05mm。 | 4) Hard Chrome Plated Piston Rod, The thickness of Chrome is 0.03-0.05mm. |
| 5.广泛应用于冶金、矿山、工程、轻化、纺织等机械。 | 5) It has been maturely applied Metallurgy, Mine, Engineering, Light-chemical and Textile Machinery. |

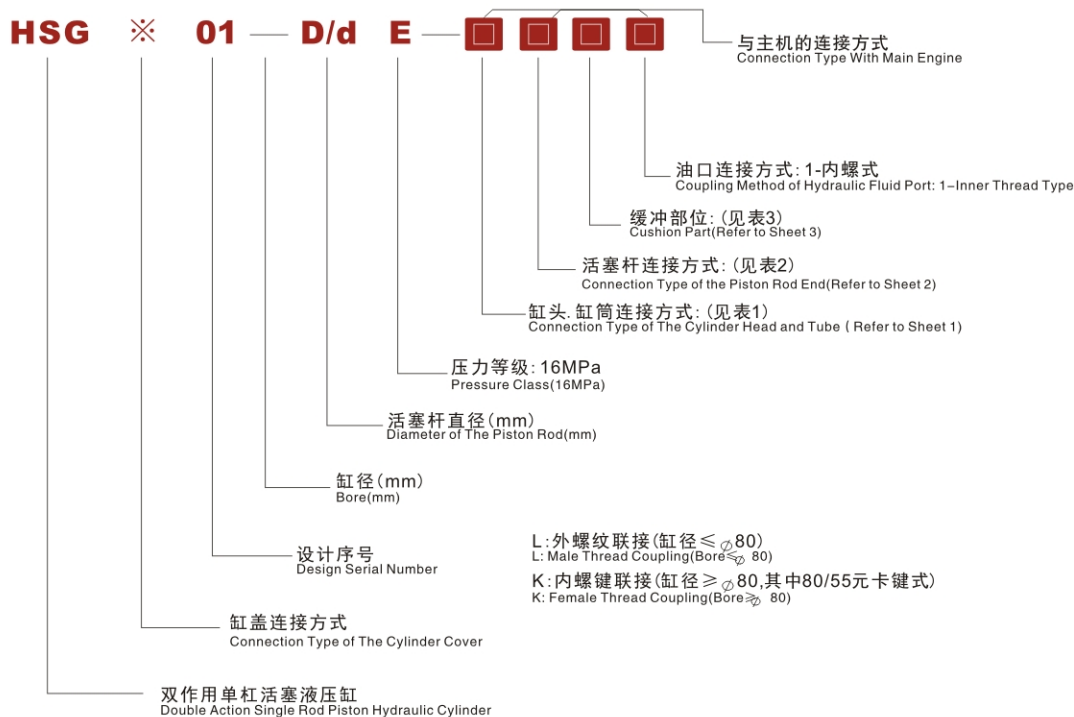


规格/Specification

油缸型号/Hydraulic Cylinder Model	LTYG型、LTYG-L型/LTYGType、LTYG-L Type		
使用压力/Working Pressure	7-14Mpa		
耐压/Pressure Resistance	21Mpa		
最低启动压力/Min Start-Up Pressure	<0.3Mpa		
工作温度/Working Temperature	-10℃-80℃		
允许最大速度/Max Speed Excepted	300mm/Sec		
效率/Efficiency	>90%		
传动介质/Transmitting Medium	常用矿物液压油/Normal Mineral Hydraulic Oil		
缸径/Bore(mm)	40, 50, 63	80, 100, 125	140, 150, 160
最大行程/Max Stroke	500mm	1200mm	2000mm

HSG※01系列油缸/HSG※01 Series Hydraulic Cylinder

订购代码/Ordering Code



缸头、缸筒连接方式表/ Connection Type of the Cylinder head and Tube

表1/Sheet1

编号/Number	连接方式/Connection Type	备注/Remark
1	缸头耳环带衬套 The Cylinder Head Earring With Bushing	
2	缸头耳环装关节轴承 The Cylinder Head Earring With Joint Bearing	
3	铰轴/Hinged Shaft	
4	端部法兰/End Flange	用于缸径D ≥ φ80(指卡键连接) For Bore D ≥ φ80
5	中部法兰/Middle Flange	

活塞杆端连接方式表/Connection Type of The Piston Rod End

表2/Sheet2

编号/Number	连接方式/Connection Type	备注/Remark
1	杆端外螺纹 Male Thread of Rod End	
2	杆端内螺纹 Female Thread of Rod End	用于缸径D ≥ φ63 For Bore D ≥ φ63
3	杆端外螺纹杆头耳环带衬套 The Cylinder Head Earring with bushing and Male Thread of Rod End	
4	杆端内螺纹杆头耳环带衬套 The Cylinder Head Earring with bushing and Female Thread of Rod End	用于缸径D ≥ φ63 For Bore D ≥ φ63
5	杆端外螺纹杆头耳环关节轴承 The Cylinder Head Earring With Joint Bearing And Male Thread of Rod End	
6	杆端内螺纹杆头耳环关节轴承 The Cylinder Head Earring With Joint Bearing And Female Thread of Rod End	用于缸径D ≥ φ63 For Bore D ≥ φ63
7	整体式活塞杆耳环带衬套 Integral Type Piston Rod and Earring With bushing	
8	整体式活塞耳环装关节轴承 Integral Type Piston Rod and Earring With Joint Bearing	仅用于φ45, φ50两种缸径 Only For Bore φ45 and φ50

HSG※01系列油缸/HSG※01 Series Hydraulic Cylinder

AA® 缓冲部位表/Cushion Part Sheet

表3/Sheet3

编号/Number	部位/Cushion Part	备注/Remark
0	不带缓冲/Without Cushion	40、50、63缸径不带缓冲 Without Cushion For Bore 40、53 and 63 速比 $\phi=2$ 时只有无杆端带缓冲 Only The Cylinder Rodless End With Cushion When $\phi=2$
1	两端带缓冲/Both Ends With Cushion	
2	缸头端带缓冲/ The Cylinder Head Ends With Cushion	
3	缸头端带缓冲/The Cylinder Head Ends With Cushion	

AA® 性能参数/Performance Parameter

表4/Sheet4

型号/Model	公称压力 Nominal Pressure (Mpa)	缸径 Cylinder Bore D (mm)	速比(Speed Ratio) ϕ						非较轴中法兰连接的 最小行程 Flange Connection Min Stroke For Not Hinged Shaft s (mm)
			1.33		1.46		2		
			杆径 Diameter of Piston Rod d (mm)	最大行程 Max Stroke s (mm)	杆径 Diameter of Piston Rod d (mm)	最大行程 Max Stroke s (mm)	杆径 Diameter of Piston Rod d (mm)	最大行程 Max Stroke s (mm)	
HSSL01-40/dE	16	40	20	320	22	400	25	480	不限/ No Limited
HSSL01-50/dE		50	25	400	28	500	32	600	不限/ No Limited
HSSL01-63/dE		63	32	500	35	630	45	750	不限/ No Limited
HSSL01-80/dE		80	40	640	45	800	55	950	不限/ No Limited
HSGK01-80/dE		80	40	640	45	800			30
HSGK01-90/dE		90	45	720	50	900	63	1080	40
HSGK01-100/dE		100	50	800	55	1000	70	1200	40
HSGK01-110/dE		110	55	880	63	1100	80	1320	45
HSGK01-125/dE		125	63	1000	70	1250	90	1500	35
HSGK01-140/dE		140	70	1120	80	1400	100	1680	50
HSGK01-150/dE		150	75	1200	85	1500	105	1800	55
HSGK01-160/dE		160	80	1280	90	1600	110	1900	45
HSGK01-180/dE		180	90	1450	100	1800	125	2150	45
HSGK01-200/dE		200	100	1600	110	2000	140	2400	50
HSGK01-220/dE		220	110	1760	125	2200	160	2640	50
HSGK01-250/dE		250	125	2000	140	2500	180	3000	60

注:

1. 速比 ϕ :系指活塞有效面积与活塞杆腔有效面积之比。
2. 最大行程原则上是:
 - $\phi=1.33$ 时, $S=8D$ (缸径)
 - $\phi=1.46$ 时, $S=10D$ (缸径)
 - $\phi=2$ 时, $S=12D$ (缸径)
3. 用户所需 S >表内规定最大行程时,应通过双方协商解决。
4. 铰轴和中法兰连接的最小行程按表5、6、7、8选定。

Remark:

1. Speed Ratio means: The effective area of Piston and Piston Rod End Chamber.
2. Comparison 2. In Principle, Max Stroke is: $\phi=1.33$, $S=8D$ (Bore) $\phi=1.46$ $S=10D$ (Bore) $\phi=2$, $S=12D$ (Bore).
3. Both Party must settle negotiatedly When S is above the Max Stroke Range of the Sheet.
4. For the Hinged Shaft and Middle Flange, Min Stroke must be Selected according to Sheet 5, 6, 7 and 8.

LT-J1310系列双控双可调气压机(0.3-1T) LT-J1310 Series Double Control And Double Adjustable Air Compressor Punch(0.3-1T)
 **订购代码/Ordering Code**

LT — **J** X **13** — **10**
 公司名称 压力机械 气压系列 压力吨数
 Company Name Pressure Machine Air Compressor Punch Series Tonnage


 **规格/Specification**

项目/Item 规格/Specification	LT-J1302	LT-J1303	LT-J1305	LT-J13010
额定输出力/Rated Output Power(KN)	0.2	0.3	0.5	1.0
气缸缸径/ Air Cylinder Bore(mm)	80	100	125	160
工作行程/Working Stroke(mm)	300	300	300	300
冲压轴对机身工作台的垂直度/Perpendicular Degree(mm)	0.05/50	0.05/50	0.05/50	0.05/50
工作台面有效尺寸/Dimension of Working Area(mm)	200X250	260X280	280X350	300X380
生产效率/Productive Efficiency(Time/Min)	≥45	≥45	≥45	≥45
耗气量/Air Consumption(m ³ /s)	0.05	0.08	0.15	0.25
电源/Voltage and Power(v/v)	AC220/10	AC220/10	AC220/10	AC220/10

LT-J3106系列气液增压机(2T-20T) LT-J3106 Series Air And Liquid Compressor Reinforced Punch(2T-20T)
 **订购代码/Ordering Code**

LT — **J** X **31** — **06**
 公司名称 压力机械 气压系列 压力吨数
 Company Name Pressure Machine Air Compressor Punch Series Tonnage


 **规格/Specification**

项目/Item 规格/Specification	LT-J3106
额定输出力/Output Power Range(KN)	58.8
输出力范围/Delivery Pressure Scope(KN)	19.6-58.8
工作行程/Working Stroke(mm)	80
增压有效行程/Valid Stroke of Increasing Pressure(mm)	6
开距/Adjustable Working Height(mm)	300
冲压轴对机身工作台的垂直度/Perpendicular Degree(mm)	0.05/50
冲压轴上模柄安装孔径与深度/Holesize and depth(mm)	∅25 ^{H7} X40
保压时间调节范围/The Regulated Time Range of Guaranteed Pressure(S)	0-10
工作台面有效尺寸/Dimension of Working Area(mm)	300X300
生产效率/Productive Efficiency(Time/S)	≥45
耗气量/Air Consumption(m ³ /s)	0.25
电源/Voltage and Power(V/V)	AC220/10

快插式气接管接头/Quick Connecting Tube Fittings

PC	POC	POC-G	PL	PL-G	PT	PST	PST-G
PWT	PWT-G	PLL	PLL-G	PLF	PLF-G	PUC	PUL
PUT	PY	PG	PW	PGT	PZA	PPF	PP
PCF	PCF-G	PMF	PMF-G	PMM	PLM	PLJ	PGJ
PH	PH-G	PHF	PHF-G	PKD	PKD-G	PKG	PKJ
PYJ	PWJ	PIJ	PIG	PA	PC-P	PAF	PAF-G

迷你接头/Mini Fittings

PC-C	PT-C	PL-C	PST-C	PCF-C	POC-C	PUC-C	PUL-C
PUT-C	PG-C	PY-C	PW-C	PGJ-C	PMM-C		

全塑料快插式气管接头/Two-touch Fittings



CK

GCK

FCK

HVSF

HVFF

HVFS

HVSS

HSV

消声器/Silencers



BSL

SD

BESL

BSLM

PSL

PSU

快插 Coupler



SH

SM

SF

SP

PH

PM

PF

PP



OSH

OSM

OSF

OSN

PU/尼龙管/PU/NYLON TUBES



PU

NA

UC

TC

吹尘枪 AIR GUNS



Product Code

AG	—	01	—	B
Air Gun		Nozzle		Color
		00-20mm		B:Blue
		01-100mm		R:Red
		02-200mm		
		03-300mm		